

- Affordable private school education since 1993
- Safe and secure environment
- Quality care and education
- Christian values



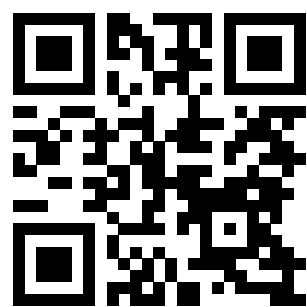
ROYAL SCHOOLS PRINCESS PARK

GRADE R - GRADE 12
(5 YEARS OLD BY 30 JUNE)



30
YEARS

SCAN TO VISIT
OUR WEBSITE!



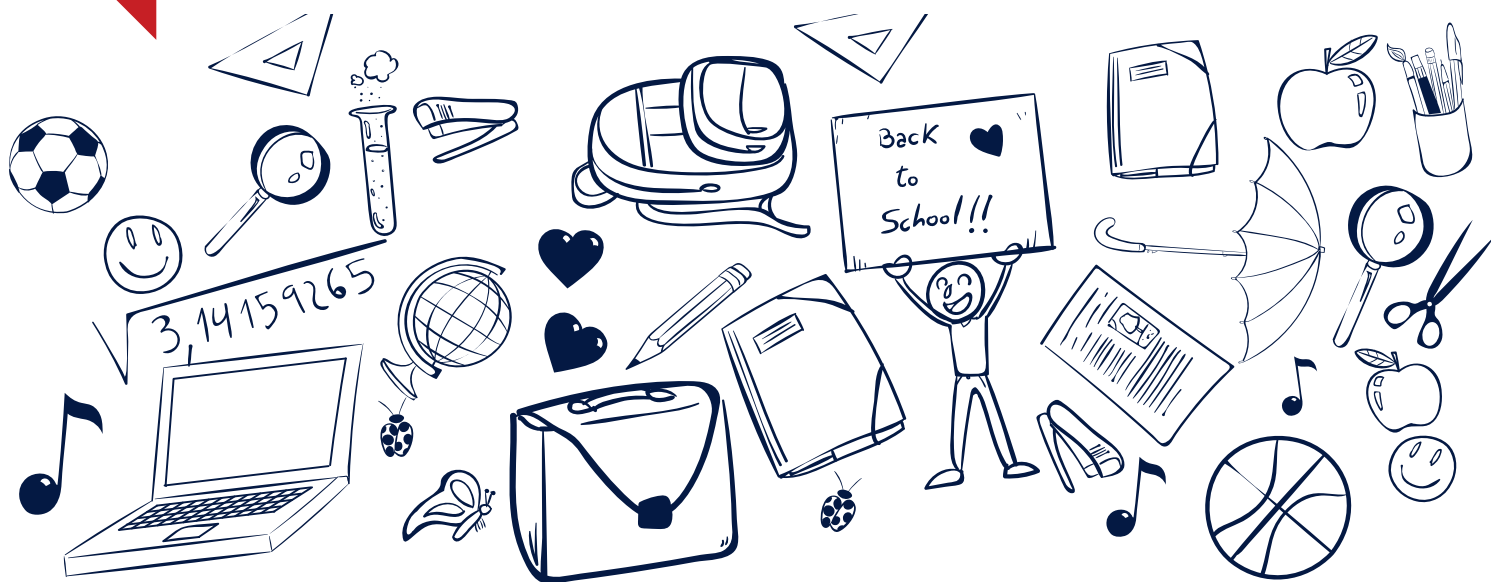
☎ 012 324 1069 / 012 324 5075
🌐 www.royalschools.co.za
✉ princesspark.admissions@royalschools.co.za

30 YEARS OF QUALITY PRIVATE EDUCATION

**“ONE CHILD, ONE TEACHER, ONE BOOK,
ONE PEN CAN CHANGE THE WORLD”**

MALALA YOUSAFZAI

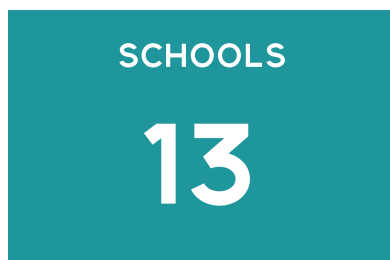
**YOU CAN NOW GIVE YOUR
CHILD THE EVERLASTING
GIFT OF PRIVATE SCHOOL
EDUCATION**





Royal Schools was established in 1993. We provide affordable quality private education. We offer academic excellence through experienced management and committed staff in a convenient and safe environment.

Our vision is to be the independent school of choice in the communities we serve.

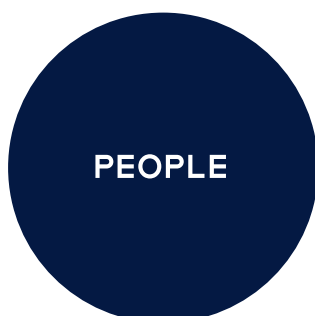


FINANCIER



PROPERTY PARTNER

OUR VALUES



"We always put people first in whatever we do"



"We always do what we say"



"We finish what we start"



"We always give our best and improve on what we do"

OUR SCHOOL



ACADEMICS

- CAPS curriculum
- National Senior Certificate (NSC) Grade 12
- Gr R (turning 5 years old) to Gr 12
- Registered with the GDE (Reg no. 232199)
- Umalusi accredited (Reg no. 00703)
- The language of tuition is English
- Our behaviour is aligned to Christian values
- Languages offered:
 - Primary school : English (HL), Afrikaans (FAL)
 - High School: English (HL), Setswana (HL), Afrikaans (FAL)
- Maximum of 30 learners per primary school class and 35 per secondary school class
- We are in partnership with Resolute Robotics
- We make use of Yenza services which is psychometric testing system and it helps learners with career guidance
- Our school has interactive boards
- Grade 10-12 subject offering:

All Languages

English HL
Afrikaans FAL
Setswana HL
English FAL

Compulsory Subjects

Maths
Maths Literacy
Life Orientation

Electives

Accounting
Economics
Business Studies
Physical Sciences
History
Computer Applications Technology
Geography
Life Sciences
Tourism



SPORT

Athletics

Soccer

Netball



CULTURE

Eisteddfod

Choir

Concert

Fun days

Social Projects

Outings and trips

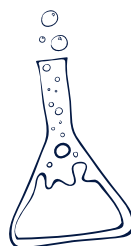
Chess

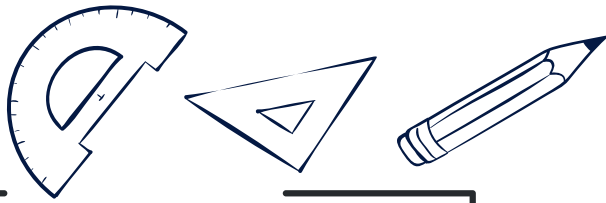
FACILITIES

44 Classrooms with projectors and air conditioning

Computer centre

Science laboratories





STATIONERY AND TEXTBOOKS

- Stationery must be purchased from stores of your choice from a prescribed stationery list that will be provided by the school
- Lost/used stationery must be replaced/replenished by parents
- All textbooks are provided and included in the school fees
- Lost or damaged textbooks must be replaced.



- 24 hour security with access control, armed response and off site monitoring
- 66 CCTV cameras.



TRANSPORT

- No transport is provided by the school
- Contact details of transport providers are available from the school office.

CORRESPONDENCE

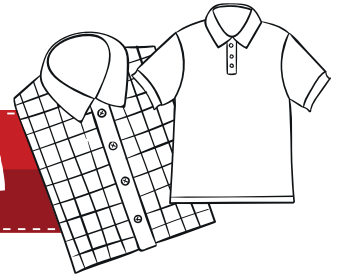


We use D6 Connect to communicate with parents



Royal Schools Princess Park

UNIFORM

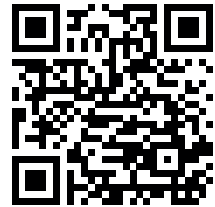


310 WF Nkomo street at Queens Private School

Monday	07h00 - 15h00
Tuesday	07h00 - 15h00
Wednesday	07h00 - 15h00
Thursday	07h00 - 15h00
Friday	07h00 - 15h00
Saturday	08h00 - 12h00
(First and last Saturday of each month)	

Phone & Whatsapp - 066 398 6817
Email address - ptauniform@royalschools.co.za

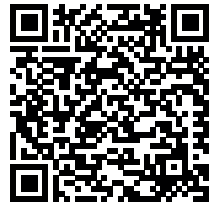
SCAN THIS CODE
FOR MORE UNIFORM
INFORMATION



AFTERCARE

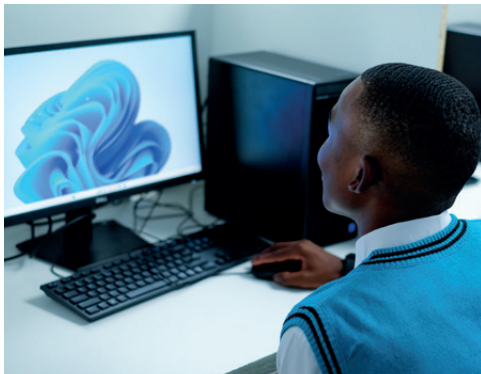
- Available after school until 17:30
- No aftercare facility is available during school holidays
- Fees are available from the school
- For more information please request the aftercare form.

SCAN THIS CODE
FOR MORE
AFTERCARE
INFORMATION



TERMS AND TIMES

- GDE terms – 4 terms a year
- 7:20 – 13:30 (Gr R-3)
- 7:20 – 13:45 (Gr 4-7)
- 7:20 – 14:15 (Gr 8-11)
- 7:20 – 16:00 (Gr12)
- Fridays school closes at 13:00 for all grades



HOW TO REGISTER

**FOLLOW THESE
QUICK AND
EASY STEPS!**

STEP 01

Contact us for an application and information form.

princesspark.admissions@royalschools.co.za

STEP 02

Submit the completed application form together with all required supporting documents to:

princesspark.admissions@royalschools.co.za

OR deliver to the school

OR apply online

(An incomplete application will not be considered).

STEP 03

Application forms will be assessed and verified

If application was successful

STEP 04

Parents will receive the following via email: a provisional acceptance letter, debit order form and an invoice for a once-off, non-refundable, registration fee.

STEP 05

Pay your registration fee and send the proof of payment to:

princesspark.admissions@royalschools.co.za

BANKING DETAILS:

Bank: ABSA
Branch Code: 632 005
Account Name: Princess Park College
Account Number: 40 4378 9091
Your Reference: Learner Name, Surname and Grade

STEP 06

Receive an acceptance and welcome letter via email.

STEP 07

Welcome to the family!

Please refer to www.royalschools.co.za regularly to stay up to date with all the relevant news and arrangements.

Royal Schools Alberton

 011 100 5840

 alberton.admissions@royalschools.co.za

Corner JG Strijdom and Kliprivier Drive, Alberton


Royal Schools Princess Park

 012 324 1069

 princesspark.admissions@royalschools.co.za

614 Pretorius Street, Arcadia, Pretoria

Royal Schools Queens Private

 012 327 6714

 queensprivate.admissions@royalschools.co.za

310 WF Nkomo Street, Pretoria West

Royal Schools Sky City

 010 001 8984

 skycity.admissions@royalschools.co.za

Corner of Lemon Shark & Kingfish Streets, Watervalsspruit, Alberton

Amberfield College

 012 534 3344

 registrations@amberfieldcollege.co.za

4810 Amampondo Street Rooihuiskraal North x 46, Centurion